

PART LIST

Part No.	Description	Size No.	Q'ty	Part No.	Description	Size No.	Q'ty
1	Base (Bottom Plate)		1	49	Roller Shaft		1
2	Base (Left Part)		1	50	Hex. Socket Cap Screw	M10X25	2
2-1	Nut	M8	2	51	Pedal Plate		1
3	Base (Right Part)		1	52	Rubber Pad		4
4	Base (Front Part)		1	53	Pedal Switch		1
4-1	Hex. Cap Bolt	M8x16	2	53-1	Micro Switch		1
4-2	Nut	M8	2	54	Round Head Screw	M4X8	4
5	Hex. Cap Bolt	M12X40	2	55	Hex. Socket Cap Screw	M6X8	1
6	Nut	M12	2	56A	Emergency Switch Box		1
8	Hex. Socket Cap Screw	M8X16	6	56-1	Pipe		1
8-1	Washer	M8	6	57A	Switch Cover		1
9	Plate		1	57-1	Flat Head Cross Screw		4
10	Hex. Socket Cap Screw	M5X8	4	58	Round Head Screw	M4X8	4
11	Coolant Tank		1	58-1	Nut	M4	4
12	Hex. Cap Bolt	M8X16	2	59A	Emergency Switch		1
13	Coolant Gauge		1	60	Handle		1
14	Hex. Cap Bolt	M10X30	2	60-1	Hex. Socket Cap Screw	M8X20	2
15	Tank Cover		1	60-2	Nut	M8	2
16	Filter		1	61	Handle		1
17	Pump		1	61-1	Nut	M12	1
18	Hex. Socket Cap Screw	M6X15	2	63	Locking Lever		1
18-1	Washer	M6	2	63-1	Set Screw	M10X16	1
22	Hose Clamp		1	64	Hex. Socket Cap Screw	M10X35	1
23	Hose	5/16" X235cm	1	64-1	Spring Washer	M10	1
23-1	Hose	1" X45cm	1	65	Shaft Nut		1
24A	Coolant and Chip Tray		1	65-1	Oil Seal		1
24-1	Plate		4	65-3	Disk		1
24-2	Hex. Cap Bolt	M10X20	4	65-4	Spring Washer	M8	4
24-3	Nut	M10	4	65-5	Hex. Socket Cap Screw	M8X35	4
24-4A	Block Plate		1	66A	Shaft		1
25	Mounting Bracket		2	68	Swivel Arm		1
26	Spring Washer	M10	4	68-1	Hex. Cap Bolt	M10X35	1
27	Hex. Socket Cap Screw	M10X20	4	69	Scale		1
28	Washer	M10	2	70	Rivet	2m/m	3
29	Hex. Cap Bolt	M10X20	4	71	Pin		1
30	Hex. Cap Bolt	M12X40	2	72	Hollow Pin	∅ 2.5x16	1
31	Nut	M12	2	73	Spring		1
32	Scale		1	74	Bushing		1
33	Round Head Screw	M5X10	2	75	Bracket		1
34	Nut		1	76	Spring Washer	M8	2
35	Switch		1	77	Hex. Socket Cap Screw	M8X20	2
36	Emergency Switch	∅ 25	1	78	Nut		1
37	Grommet		2	79	Jam Nut	M40	1
38	Grommet		1	80	Star Washer	M40	1
39	Track		1	81	Anti-Dust Cover	M40	2
40	Hex. Socket Cap Screw	M8X35	2	82	Ball Bearing	32008	2
40-1	Nut	M8	2	83	Shaft		1
41	Set Screw	M6X12	4	84	Hex. Cap Bolt	M10X45	1
42	Washer		1	85	Nut	M10	2
43	Handle	M8X25	1	86A	Pointer		1
44	Roller Stand		1	87	Hex. Socket Cap Screw	M5X8	1
45	Hex. Cap Bolt	M12X25	2	88A	Cover		1
46	Spring Washer	M12	2	88-1	Hollow Pin	∅ 6X20	2
46-1	Washer	M12	2	88-2	Set Screw (not show)	M8X10	1
47	Roller		1	89	Hex. Socket Cap Screw	M8X35	3
48	Ball Bearing	6004 ZZ#	2	89-1	Spring Washer	M8	3
48-1	C-Ring	S-20	2	92	Table		1

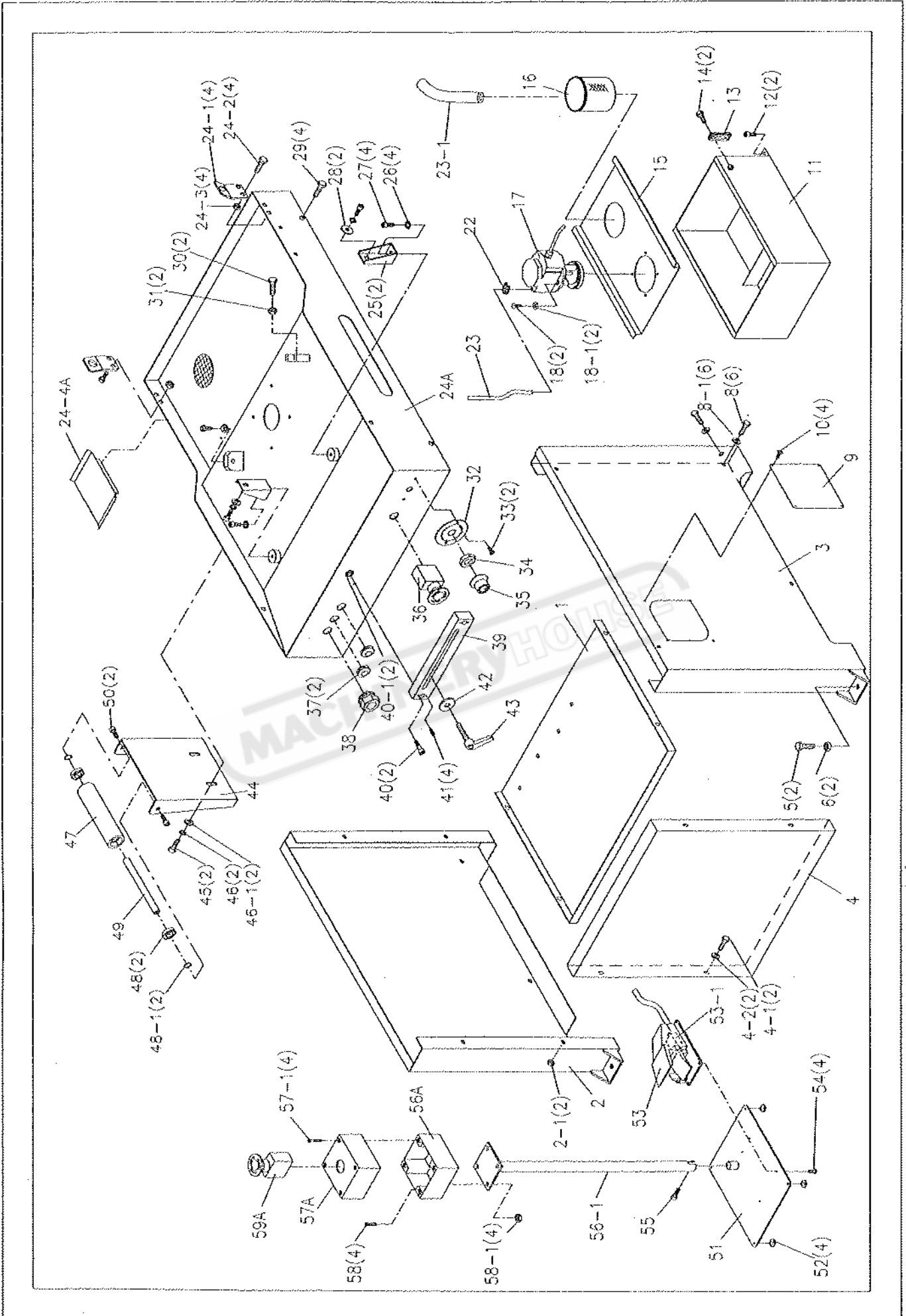
940812

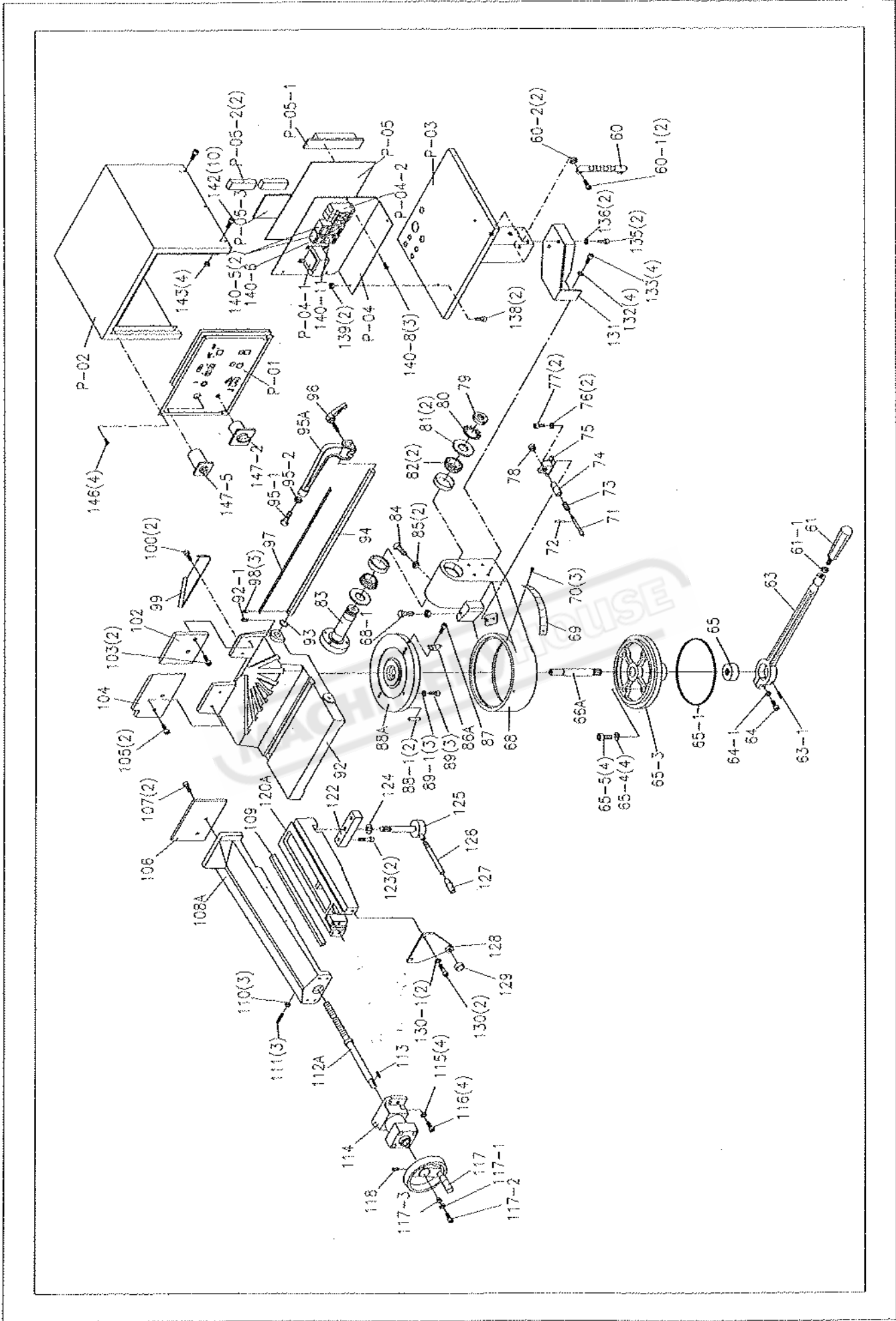
PART LIST

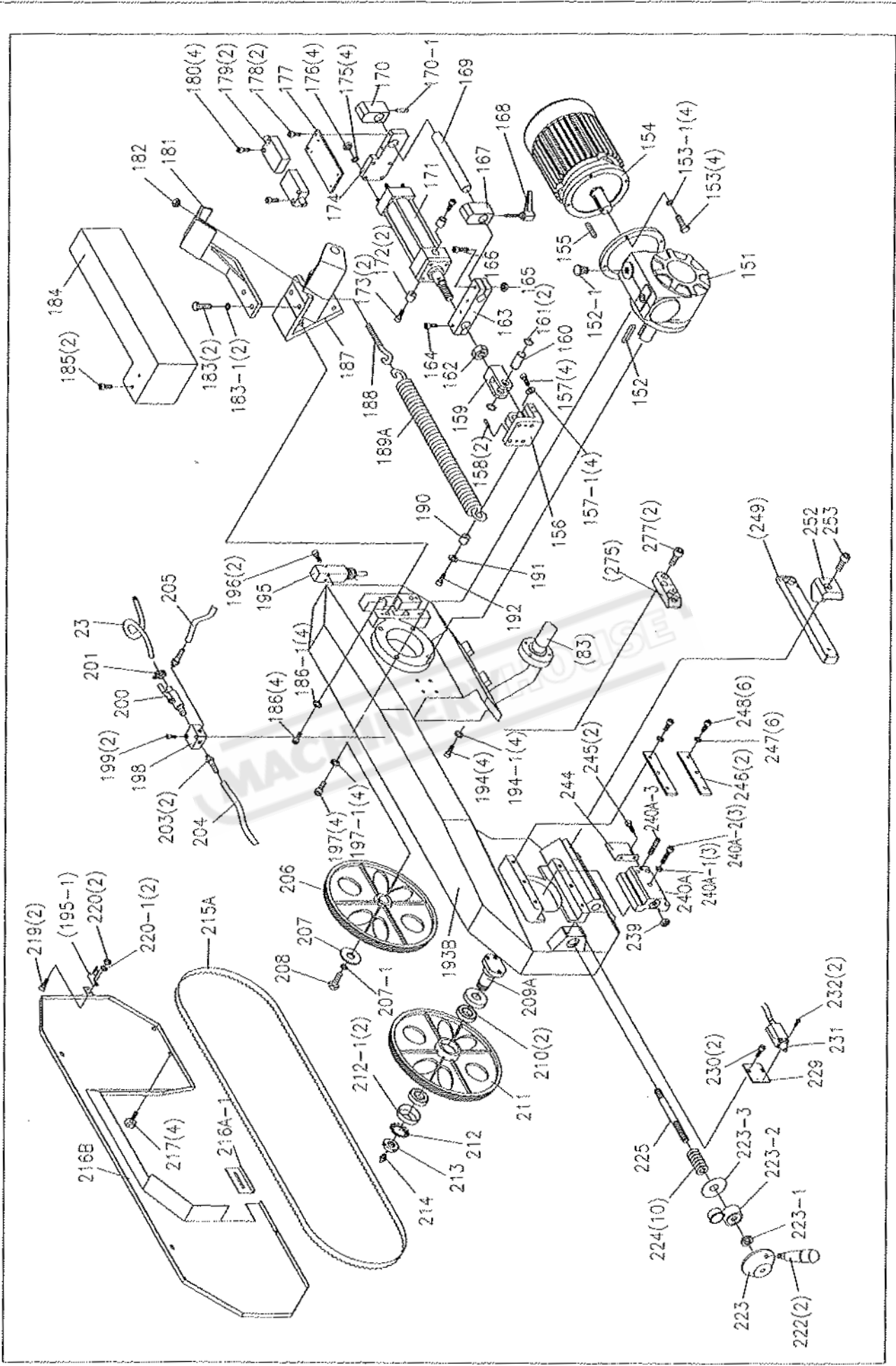
Part No.	Description	Size No.	Q'ty	Part No.	Description	Size No.	Q'ty
92-1	Set Screw	M6X12	1	147-5	Speed Selector		1
93	C-Ring	S-20	1	151	Reduction Unit		1
94	Bar-Stop-Rod		1	152	Key	8X8X30	1
95A	Bar-Stop		1	152-1	Vent Screw		1
95-1	Hex. Cap Bolt	M10X45	1	153	Hex. Cap Bolt	M8X25	4
95-2	Nut	M10	1	153-1	Spring Washer	M8	4
96	Handle	M10X35	1	154	Motor		1
97	Scale		1	155	Key	8X7X35	1
98	Rivet	2m/m	3	156	Anchoring Dowel		1
99	Chip Gutter		1	157	Hex. Socket Cap Screw	M8X25	4
100	Hex. Socket Cap Screw	M6X8	2	157-1	Spring Washer	M8	4
102	No-Burr Jaw		1	158	Hollow Pin	Ø6X20	2
103	Hex. Socket Cap Screw	M6X15	2	159	Coupling Fork		1
104	Counter Vise Jaw		1	160	Pin on Fork		1
105	Hex. Socket Cap Screw	M6X15	2	161	C-Ring	S-20	2
106	Vise Jaw		1	162	Nut		1
107	Flat Head Machine Screw	M6X15	2	163	Rod Supporting Block		1
108A	Vise		1	164	Hex. Socket Cap Screw	M10X30	1
109	Dovetail Plate		1	165	Nut	M10	1
110	Nut	M5	3	166	Hex. Socket Cap Screw	M10X40	1
111	Set Screw	M5X25	3	167	Adjustable Stop		1
112A	Vise Screw for Hydraulic Drive		1	168	Handle	M8X25	1
113	Key	5X5X20	1	169	Stop Bar		1
114	Hydraulic Cylinder (Vise)		1	170	Adjustable Stop		1
115	Spring Washer	M8	4	170-1	Set Screw	M8X10	1
116	Hex. Socket Cap Screw	M8X25	4	171	Hydraulic Cylinder (Arm)		1
117	Hand Wheel		1	172	Bushing		2
117-1	Spring Washer	M6	1	173	Hex. Socket Cap Screw	M10X25	2
117-2	Hex. Socket Cap Screw	M6X25	1	174	Upper Plate on Hydraulic Unit		1
117-3	Bushing		1	175	Spring Washer	M8	4
118	Set Screw	M8X10	1	176	Nut	M8	4
				177	Setting Plate		1
120A	Vise Seat		1	178	Hex. Socket Cap Screw	M6X12	2
				179	Limit Switch	XCK-M102	2
				180	Hex. Socket Cap Screw	M5X10	4
122	Vise Setting Plate		1	181	Spring Holder		1
123	Hex. Socket Cap Screw	M10X35	2	182	Nut	3/8"	1
124	Setting Washer		1	183	Hex. Cap Bolt	M12X30	2
125	Setting Screw		1	183-1	Spring Washer	M12	2
126	Setting Bolt		1	184	Cylinder Guard		1
127	Handle		1	185	Hex. Socket Cap Screw	M6X60	2
128	Setting Plate		1	186	Hex. Socket Cap Screw	M10X35	4
129	Bushing		1	186-1	Spring Washer	M10	4
130	Hex. Socket Cap Screw	M8X20	2	187	Cylinder Coupling		1
130-1	Spring Washer	M8	2	188	Spring Hook	3/8"	1
131	Electric Box Holder		1	189A	Spring		1
132	Spring Washer	M8	4	190	Setting Bushing		1
133	Hex. Socket Cap Screw	M8X20	4	191	Washer	M8	1
135	Hex. Socket Cap Screw	M10X35	2	192	Hex. Socket Cap Screw	M8X35	1
136	Spring Washer	M10	2	193B	Saw Arm		1
138	Hex. Socket Cap Screw	M6X25	2	194	Hex. Socket Cap Screw	M10X35	4
139	Nut	M6	2	194-1	Spring Washer	M10	4
140-5	Magnetic Switch		2	195	Limit Switch		1
140-6	Overload Relay	1.2A	1	195-1	Switch Pin		1
140-8	Hex. Cap Bolt	M6X15	3	196	Hex. Socket Cap Screw	M4X35	2
140-11	Overload Relay	6.5A	1	197	Hex. Socket Cap Screw	M10X35	4
142	Hex. Socket Cap Screw	M5X8	10	197-1	Spring Washer	M10	4
143	Nut	M5	4	198	Pipe Fitting Seal		1
146	Round Head Screw	M5X10	4	199	Hex. Socket Cap Screw	M5X30	2
147-2	Main Connect Switch		1	200	Coolant Switch		1

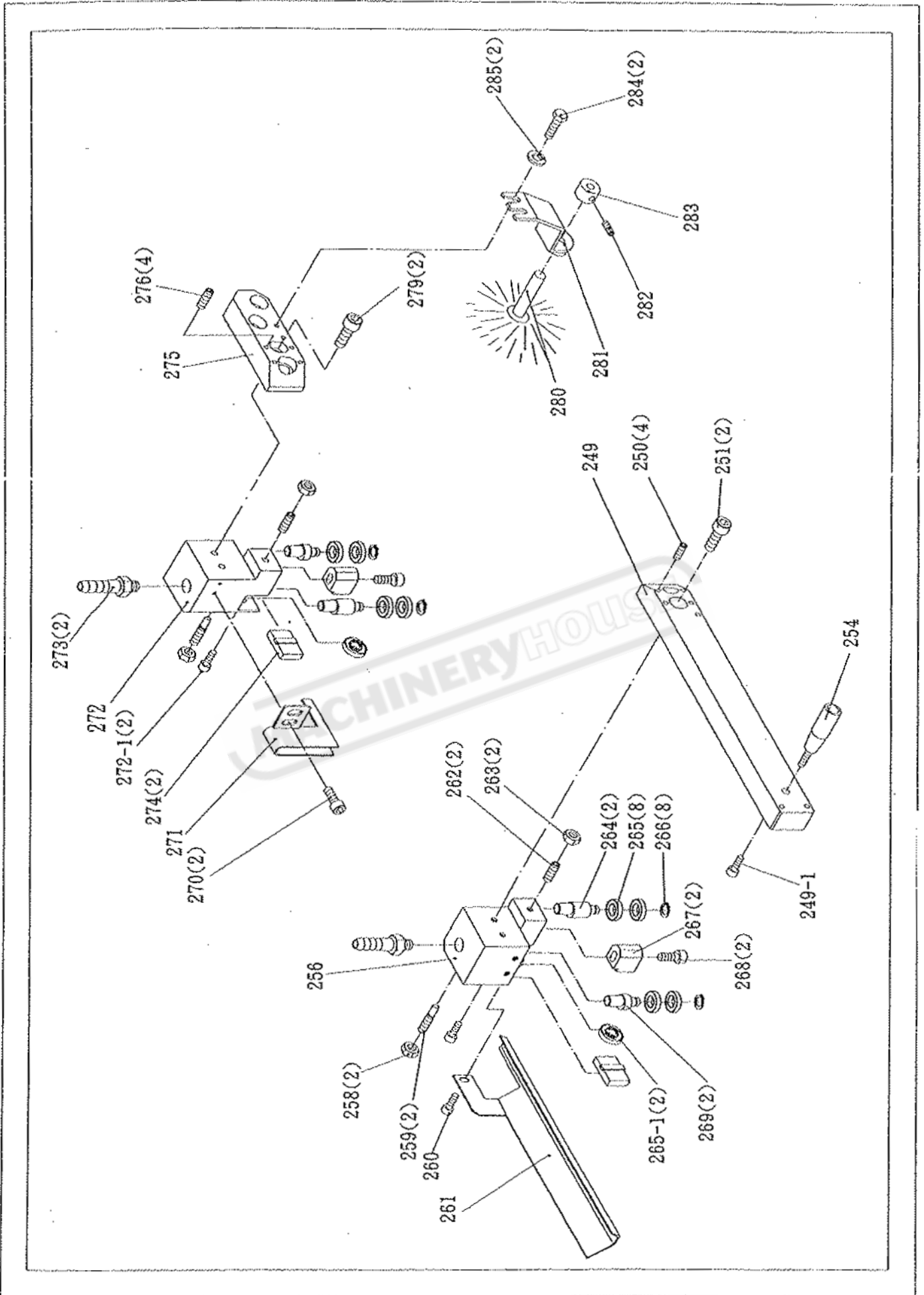
PART LIST

Part No.	Description	Size No.	Q'ty	Part No.	Description	Size No.	Q'ty
201	Hose Clamp		1	261	Blade Guard		1
203	Pipe Fitting	1/4PX5/16	2	262	Set Screw	M6X12	2
204	Hose	5/16" x40cm	1	263	Nut	M6	2
205	Hose	5/16" x90cm	1	264	Centric Shaft		2
206	Drive Flywheel		1	265	Ball Bearing	#608ZZ	8
207	Washer		1	265-1	Ball Bearing	#608ZZ	2
207-1	Spring Washer	M10	1	266	E-Ring	Ø7	8
208	Hex. Cap Bolt	M10X25	1	267	Blade Guide		2
209A	Idle Flywheel Shaft		1	268	Hex. Socket Cap Screw	M6X25	2
210	Roller Bearing	32007	2	269	Eccentric Shaft		2
211	Idle Flywheel		1	270	Hex. Socket Cap Screw	M6X8	2
212	Star Washer	Ø35	1	271	Blade Guard		1
212-1	Anti-dust Cover	M35	2	272	Guide Bracket		1
213	Jam Nut	M35	1	272-1	Hex. Socket Cap Screw	M6X12	2
214	Oil Inlet	1/16	1	273	Pipe Fitting		1
215A	Saw Blade		1	274	Blade Guide		2
216B	Blade Cover		1	275	Ball Bearing Bracket		1
216A-1	Extension		1	276	Set Screw	M6X12	4
217	Plum Screw	M5X10	4	277	Hex. Socket Cap Screw	M10X25	2
219	Round Head Screw	M4X8	2	279	Hex. Socket Cap Screw	M8X20	2
220	Nut	M4	2	280	Brush		1
220-1	Spring Washer	M4	2	281	Brush Clamp		1
222	Handle		2	282	Set Screw	M5X5	1
223	Handle Wheel		1	283	Set Bushing		1
223-1	Thrust Bearing	51103	1	284	Hex. Cap Bolt	M6X12	2
223-2	Blade Tension Gauge		1	285	Washer	M6	2
223-3	Plate		1	325A	Y Connector		1
224	Special Spring Washer		10	326A	Flow Control		1
225	Tension Shaft		1	327A	Hose	2.5 meters	1
229	Plate		1	328A	Hose	2.0 meters	1
230	Hex. Socket Cap Screw	M6X12	2	329A	Hose	2.0 meters	1
231	Limit Switch		1	330A	Hose	2.0 meters	1
232	Hex. Socket Cap Screw	M4X25	2	331A	Hose	1.5 meters	1
239	Nut	M16	1	332A	Manifold		1
240A	Slide Bracket		1	333A	Motor		1
240A-1	Spring Washer	M10	3	334A	Pump		1
240A-2	Hex. Socket Cap Screw	M10x50	3	335A	Oil Gauge		1
240A-3	Set Screw	M10x25	1	336A	Solenoid	2D2	1
244	Cover Plate		1	337A	Solenoid	3C2	1
245	Hex. Socket Cap Screw	M6X8	2	337A-1	Pilot Check		1
246	Gib		2	338A	Reducing		1
247	Spring Washer	M8	6	339A	Oil Fill Port		1
248	Hex. Socket Cap Screw	M8X25	6	340A	Tank Cover		1
249	Blade Guide Movable Rod		1	341A	Tank		1
249-1	Hex. Socket Cap Screw	M6x8	1	P01	Control Panel		1
250	Set Screw	M6X12	4	P02	Electrical Box Cover		1
251	Hex. Socket Cap Screw	M8X20	2	P03	Electric Box Platform		1
252	Setting Bracket		1	P04	Electric Parts Plate		1
253	Hex. Socket Cap Screw	M12X50	1	P04-1	Transformer		1
254	Handle		1	P04-2	Fuse Block		1
256	Guide Bracket		1	P05	Electric Parts Plate (Rear)		1
258	Nut	M10	2	P05-1	Contacts		1
259	Set Screw	M10X35	2	P05-2	IC Contacts		2
260	Hex. Socket Cap Screw	M6X8	1	P05-3	IC Plate		1









Semi Auto and Vise Hydraulic System

